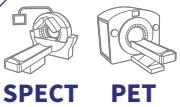


# EASYVIEW

## COMPLETE RANGE OF TUNGSTEN SYRINGE SHIELDS



ALL ENERGIES



### ASSOCIATED PRODUCTS

- Crocobox carrier
- Easybox carrier
- PRA3/PRA10 needle bins
- Cont'Elu elution pots
- PFE/PME/PHE vial shields



Easyview syringe shields are available in a wide and complete range of sizes and shielding (from 2 to 7 mm of tungsten) to offer users an **ergonomic and protective solution** that is essential during the preparation, transfer and injection of **all-energy radio-pharmaceutical** doses for SPECT and PET activities. Regardless of the radioisotope to be handled: <sup>99m</sup>Tc, <sup>111</sup>In, <sup>123</sup>I, <sup>177</sup>Lu, <sup>201</sup>Tl, <sup>131</sup>I, <sup>18</sup>F, <sup>68</sup>Ga and the required administration method: direct injection to

the patient, connection to a catheter or a 3-way valve, the **comfortable hold** of this syringe shield allows for **dexterity, precision and speed of execution of the operation**, thus limiting contact time with the radioactive element to a minimum. This range of ergonomic syringe shields meets the highest regulatory standards and is approved for sale on the US market.

## LME CHARACTERISTICS

General	1 mL			2 mL		2,5 mL	3 mL	5 mL			10 mL			
Size planned for the syringe:	70 mm	75 mm	76 mm	50 mm	53 mm	59 mm	69 mm	57 mm	61 mm	64 mm	73 mm	75 mm	83 mm	85 mm
Component parts:	Tungsten body / 304 L stainless steel syringe holder / Lead glass window / PA 6.6 plastic lock													
<b>LOW &amp; MEDIUM ENERGY</b>														
Inner diameter:	9 mm	11,5 mm	9 mm	11,5 mm				15 mm			17,5 mm			
Weight:	0,12 kg	0,16 kg	0,13 kg	0,10 kg	0,11 kg	0,13 kg	0,15 kg	0,16 kg	0,17 kg	0,18 kg	0,27 kg	0,28 kg	0,31 kg	0,32 kg
Radiation protection:	2 mm tungsten 7.28 mm lead glass (density 5.2)	2 mm tungsten 7.5 mm lead glass (density 5.2)	2 mm tungsten 7.28 mm lead glass (density 5.2)	2 mm tungsten 7.5 mm lead glass (density 5.2)				2 mm tungsten 8 mm lead glass (density 5.2)			2 mm tungsten 8.7 mm lead glass (density 5.2)			
Ref.:	00021896	00022655	00022638	00021314	00022641	00021318	00022652	00022311	00022631	00022644	00021289	00022658	00022661	00027962
Ref. spare kit - lead glass:	00021899	00022657	00022640	00021316	00022643	00021321	00022654	00022310	00022633	00022646	00021292	00022660	00022663	00027964
Package														
Package dimensions:	L 130 x D 100 x H 50 mm													
Package weight:	0.2 kg + weight of syringe shield													



## FOCUS

The **main part** of the **Easyview syringe shield** is made of a **tungsten barrel** (from 2 to 7 mm depending on the model) which has been **minutely worked** on to produce a **perfectly smooth** finish that gives greater comfort and helps with the **cleaning and decontamination by immersion** or with adapted wipes.

The **attenuation** of **140 KeV gamma radiation** from  $^{99m}\text{Tc}$  is over **99.7 %** for 740 MBq activity and **86.95 % attenuation** for 300 MBq activity of  $^{68}\text{Ga}$ .

Its **large shielded viewing window** made of **high density 5.2 lead glass** with **magnifying effect** allows for **improved viewing of the volume** held in the syringe and its **graduations in full**, to **facilitate precision sampling** and thus improve daily **working comfort**.

**Engraved identification data** indicating the **model and energy** (LME or HE) on the tungsten body of the Easyview makes it **easier to choose the syringe shield** to be used in accordance with the capacity of the syringe and the radioisotope used. The engraved data also facilitates inventory and ordering of accessories.

A black plastic **lock (PA 6.6)** ensures that the syringe is secured in the syringe shield and **secures its position** by preventing unwanted random movement.

The **ingenious design** of the Easyview allows the user to **change the leaded glass viewing window independently** by removing a single screw, if necessary, either for a simple replacement or for thorough cleaning and decontamination, but also when changing the plastic syringe lock with the **tool provided** (Torx key).

## HE CHARACTERISTICS

General	1 mL			2 mL		2,5 mL	3 mL	5 mL			10 mL			
<b>Size planned for the syringe:</b>	70 mm	75 mm	76 mm	50 mm	53 mm	59 mm	69 mm	57 mm	61 mm	64 mm	73 mm	75 mm	83 mm	85 mm
<b>Component parts:</b>	Tungsten body / 304 L stainless steel syringe holder / Lead glass window / PA 6.6 plastic lock													
<b>HIGH ENERGY</b>														
<b>Inner diameter:</b>	9 mm	11,5 mm	9 mm	11,5 mm				15 mm			18 mm			
<b>Weight:</b>	0,27 kg	0,35 kg	0,30 kg	0,20 kg	0,25 kg	0,28 kg	0,32 kg	0,30 kg	0,35 kg	0,37 kg	0,52 kg	0,53 kg	0,59 kg	0,61 kg
<b>Radiation protection:</b>	6 mm tungsten 7.28 mm lead glass (density 5.2)	6 mm tungsten 7.5 mm lead glass (density 5.2)	6 mm tungsten 7.28 mm lead glass (density 5.2)	6 mm tungsten 7.5 mm lead glass (density 5.2)				6.5 mm tungsten 8 mm lead glass (density 5.2)			7 mm tungsten 8.7 mm lead glass (density 5.2)			
<b>Ref.:</b>	00024946	00024953	00024947	00024948	00024949	00024950	00024952	00024954	00024951	00024955	00024956	00024957	00024958	00028075
<b>Ref. spare kit - lead glass:</b>	00021899	00022657	00022640	00021316	00022643	00021321	00022654	00022310	00022633	00022646	00021292	00022660	00022663	00027964
<b>Package</b>														
<b>Package dimensions:</b>	L 130 x D 100 x H 50 mm													
<b>Package weight:</b>	0.2 kg + weight of syringe shield													